

Pandora

TRUCK DXL 5200L v2

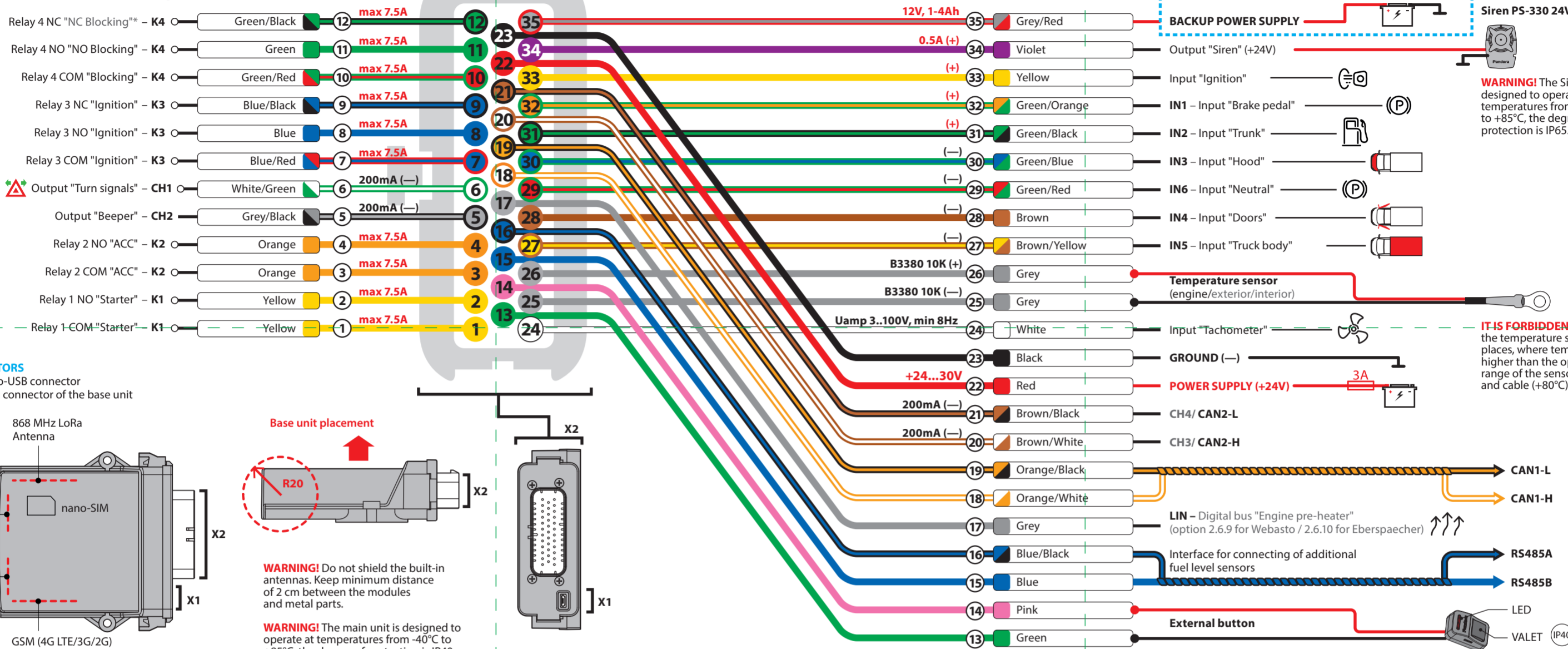
WIRING DIAGRAM

WARNING! Before starting the installation of the system: check installation recommendations on loader.pandora.info.com, Pandora Specialist App, Pandora Alarm Studio; update firmware of the base unit; choose the vehicle model code, if the CAN-bus will be connected.
WARNING! The installation locations of the base unit and system elements must meet their temperature, dust- and moisture-protection characteristics (IP40 – interior, IP54 and higher – interior, engine compartment).

WARNING! All power circuits of additional devices that are not powered through the base unit of the system should have their own fuses.
WARNING! The system is a maintenance-free device. In case of failure you must immediately contact your local supplier.
WARNING! All additional devices included in the system set are paired with the base unit. The maximum number of paired Bluetooth devices must not exceed 14.

WARNING! Disconnect the power supply before installing/replacing a SIM-card. **IT IS FORBIDDEN** to install the system on a vehicle with normal voltage other than 24V.
IT IS FORBIDDEN to install the system with damaged output cables.
IT IS FORBIDDEN to change or bypass original fuses of a system in the installation process.

*Set "NC Blocking" logic of the output in the settings to use normally connected blocking



PAIRING THE ADDITIONAL DEVICES

WARNING! Pairing/deleting/updating of the additional devices is available in the mobile application Pandora Specialist for Android smartphones and tablets.

WARNING! Do not shield the built-in antennas when installing additional Bluetooth devices. Keep minimum distance of 2 cm between the modules and metal parts.

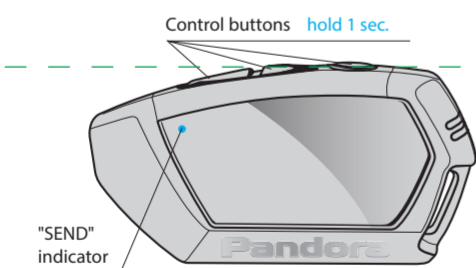
***NOTE!** The green light of LED - memory cell is empty, system is ready for pairing. The red light of LED - memory cell is busy, delete the paired device by pressing and holding the VALET button for 3 sec.

or until 4 orange flashes of the system's LED and 3 sound signals of the siren/beeper.

№1 Pairing a remote control D-043T

Pairing of the remote controls (max. 4 pcs.) is made consequentially. The last remote control can be directly paired with the system by Bluetooth. To do this: before pairing the remotes, enable the "BLE-CHANNEL" function in the remote control and delete all devices from the level №10.2.1.

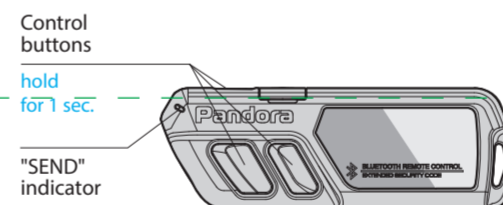
- Enter the programming level №1.
- If the LED is green and the siren/beeper sounded a beep, the system is ready for pairing. If the LED is red, level №10.2.1 is used by another device.
- Press and hold 3 buttons of a remote control (arm/disarm/F) simultaneously for 1 second (until a short beep or red flash of LED), then release the buttons.
- If pairing was successful, the siren/beeper will sound a beep.
- Pair the next remote controls (up to 4) consequentially. Press the VALET button to finish pairing.
- Finish pairing on the level №1: the siren/beeper will sound a beep; the system will enter the programming level №10.2.1 for pairing with the system by Bluetooth.



- Within 15 sec. the system will automatically search and pair a Bluetooth remote control. If Bluetooth remote is not found the system will enter the programming level №0.
- Finish pairing on the level №10.2.1: the remote control will sound 3 beeps, beeper will sound a beep, LED indicator will light red, the system will enter the programming level №0.

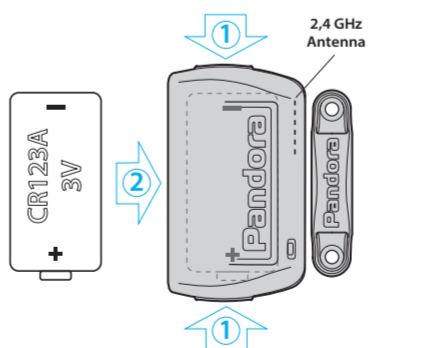
№10.2.1 - 3 Pairing a remote control D-030/D-035

- Enter the programming level №10.2.1...3.
- If the LED is green, the system is ready for pairing*.
- Press and hold 3 buttons of a remote control (arm/disarm/F) simultaneously for 1 second (until a short beep), then release the buttons.
- If pairing was successful, the LED will be red, the siren/beeper will sound a beep. The system will enter the programming level №0.



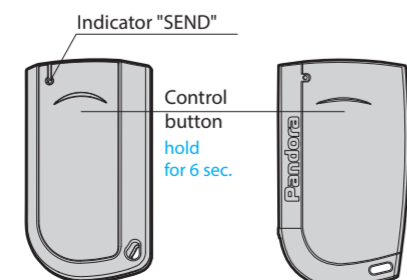
№10.3.1-4 Pairing a door sensor DMS-100BT

- Enter the programming level №10.3.1...4.
- If the LED is green, the system is ready for pairing*.
- Open the plastic case ① of the sensor carefully and insert a battery ② into the sensor.
- If pairing was successful, the LED will light red and the siren/beeper will sound a beep. The system will enter the programming level №0.



№10.1.1 - 3 Pairing radio tags BT-760 / BT-770 / BT-780

- Enter the programming level №10.1.1...3.
- If the LED is green, the system is ready for pairing*.
- Press the control button on a tag and hold it for 6 seconds (6 flashes of the SEND LED indicator), release the button after the sixth flash.
- If pairing was successful, the LED will light red and the siren/beeper will sound a beep. The system will enter the programming level №0.



№50 Pairing a mobile device with Pandora Specialist App

- Enter the programming level №50 (press and hold VALET button until the fifth beep of the siren/beeper or the fifth orange flash of LED).
- If the LED is green, the system is ready for pairing.
- Open the Pandora Specialist app on the mobile device, go to the "Advanced mounting" -> "Bluetooth", connect with the found device.
- If pairing was successful, the LED will light red and the siren/beeper will sound a beep. The system will enter the programming level №0.

Pandora Specialist application allows to configure the system from a smartphone or a tablet by Bluetooth connection or USB-OTG adapter. Scan the QR-code or go to the Google Play to download the application.

FOR ANDROID V6.1 AND HIGHER.



WARNING! Pandora Specialist application supports fast connection of the system with a mobile device by USB-OTG adapter. Connect the USB-OTG adapter to your mobile device -> connect the USB cable to the system -> connect the USB-OTG adapter with the USB cable -> enter the "Service PIN-code".

PROGRAMMING TABLE

FUNCTION	VALET BUTTON		
№0 – Entering a level	Level	Delete	Update
№1 – Pairing a remote control D043T (up to 4)	P1		
№2 – Programming the Service PIN-code	P2		
№3 – Recording the idle speed (rpm)	P3		
№4 – Reset to the factory settings	P4	H4	
№10.1.1 – Pairing a radio tag BT760 / BT770 / BT780	H1→P1→P1	H3	
№10.1.2 – Pairing a radio tag BT760 / BT770 / BT780	H1→P1→P2	H3	
№10.1.3 – Pairing a radio tag BT760 / BT770 / BT780	H1→P1→P3	H3	
№10.2.1 – Pairing a D030 / D035 / Band / Watch2	H1→P2→P1	H3	
№10.2.2 – Pairing a D030 / D035 / Band / Watch2	H1→P2→P2	H3	
№10.2.3 – Pairing a D030 / D035 / Band / Watch2	H1→P2→P3	H3	
№10.3.1 – Pairing a door sensor DMS100 BT	H1→P3→P1	H3	H5
№10.3.2 – Pairing a door sensor DMS100 BT	H1→P3→P2	H3	H5
№10.3.3 – Pairing a door sensor DMS100 BT	H1→P3→P3	H3	H5
№10.3.4 – Pairing a door sensor DMS100 BT	H1→P3→P4	H3	H5
№11 – Programming the Immobiliser PIN-code	H1•P1		
№13 – Emergency deactivating/activating Code Immobiliser function (pin-to-drive)	H1•P3		
№15 – Emergency deactivating/activating authorization devices (Immobiliser, Anti-Hi-Jack)	H1•P5		
№17 – Programming bypass of an original immobiliser	H1•P7		
№18 – Programming the Beach mode PIN-code	H1•P8		
№50 – Pairing a mobile device	H5		
№100 – Exit the programming menu	H10		

P – press X times H – hold for X sec. → – 1 sec. pause • – without a pause